



About Bartelt Packaging

Bartelt is a trusted manufacturer of pouching, cartoning, shrink wrapping, over wrapping, and case and tray packing systems, providing dependable and long-lasting solutions to food and non-food industries. Bartelt also operates as the master distributor for both FLtècnics' rollstock and pre-made pouch and Cetec Industrie large bag format packaging machines. As the world's first developer of intermittent motion horizontal form fill seal pouching machines, Bartelt is a true pioneer in automated packaging. From simple to advanced applications spanning primary and secondary packaging, quality components and a durable design are incorporated into every solution. Bartelt is a product brand of ProMach, a global leader in packaging line solutions. As part of the ProMach Flexibles & Trays business line, Bartelt helps our packaging customers protect their products and earn the trust of their consumers. ProMach is performance, and the proof is in every package. Learn more about Bartelt at www.BarteltPackaging.com and more about ProMach at www.ProMachBuilt.com

BARTELT PACKAGING, LLC
5501 N. Washington Blvd.
Sarasota, FL 34243

P: 941-359-4000
E: Bartelt.Sales@ProMachBuilt.com
BarteltPackaging.com



SCANDIA MODEL 350 OVERWRAPPER

F&T

FLEXIBLES
& TRAYS

Scandia Model 350

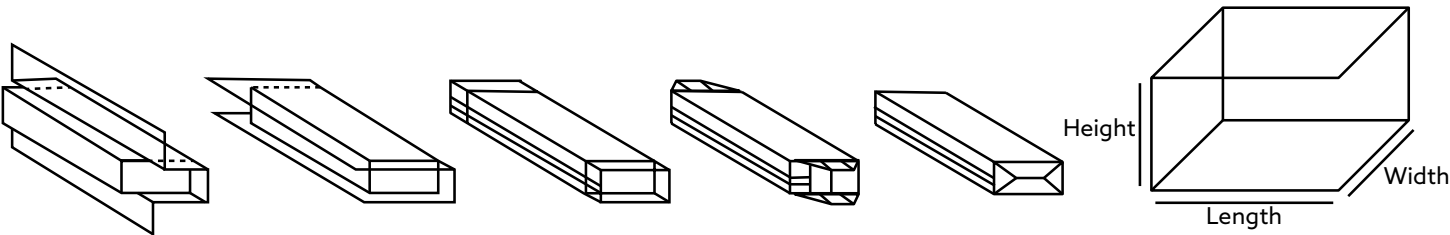
OVERWRAPPER

Scandia Model 350

The Scandia Model 350 Overwrapper Bundler produces a “cosmetic-style” of overwrap. The Model 350 is available as intermittent or continuous motion operation to accommodate your production demands.



The Scandia 350 Model achieves speeds up to 35 cycles per minute, depending on package size or bundle configurations.



PRODUCT APPLICATIONS

- Baked goods
- Confectionery
- Frozen foods
- Pharmaceuticals
- Consumer goods
- Tobacco goods

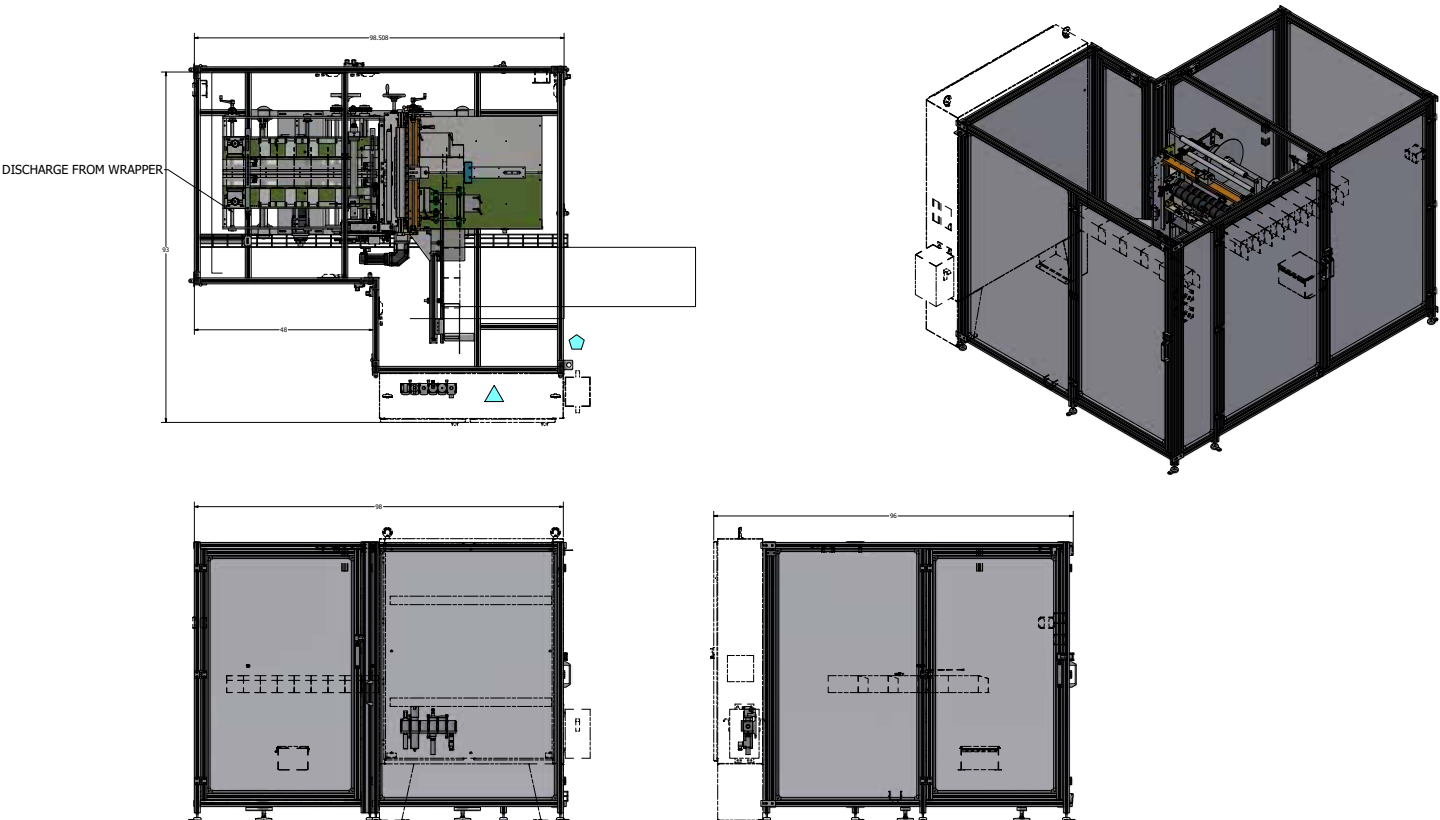
FEATURES & BENEFITS

- Compact footprint
- Three-dimensional changeover in less than 20 minutes
- Wide package size ranges

OPTIONS

- Opening tape applicator
- Automatic infeeds
- Automatic collators
- Code markers
- Printed film registration

CONFIGURATION



Contact Bartelt to inquire about packaging machinery to fit your unique requirements.
(941) 359-4000

MACHINE SPECIFICATIONS

| | | | |
|---------------|---|--------------|---------|
| Power | 460 V, 60Hz, 3-phase Controls: 24VDC | Air Flow | 20 SCFM |
| Control Panel | Standard-Rockwell electronic design | Air Pressure | 80 PSI |
| Drive Motor | Adjustable speed main drive | | |

PACK SIZES (WIDTH X LENGTH X HEIGHT)

| | | | |
|---------|---------------------------------------|---------|--|
| Minimum | 4" x 2" x 1" (101 mm x 50 mm x 25 mm) | Maximum | 12" x 6" x 4" (304 mm x 152 mm x 101 mm) |
|---------|---------------------------------------|---------|--|

WRAP STYLE

6-Sided (Full Overwrap)
5-Sided (Bundle)
Band (Bundle)

FILM TYPE

Polypropylene
Cellophane